

shopvalves.com

DIMENSIONS & DATA CERTIFIED FOR:

Representative:

Order:

Customer:

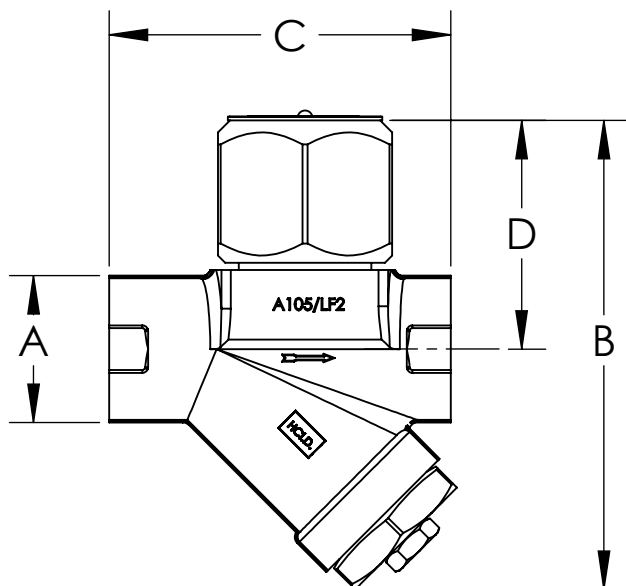
Order:

Project:

Requirements:

By:

Date:



LIST OF MATERIALS

NAME OF PART	MATERIAL
BODY	DUAL CERTIFIED FORGED CARBON STEEL
CAP	ASTM A105N/A350 GR. LF2 CL.1
DISC	ASTM A564 TYP630, H900
SEAT	ASTM A564 TYP630, H900
SCREEN	STAINLESS STEEL, T304, 30 X 30 MESH
RETAINER	DUAL CERTIFIED FORGED CARBON STEEL ASTM A105N/A350 GR.LF2 CL.1
BLOWDOWN PLUG	ASTM A350 GR. LF2 CL.1
GASKET	GRAPHITE + SS 304
DOWEL PIN	HARDENED STEEL

MODEL

CD72SR

CONNECTION

NPT

1/2 [DN 15]

3/4 [DN 20]

1 [DN 25]

BSPT

1/2 [DN 15]

3/4 [DN 20]

1 [DN 25]

SW

1/2 [DN 15]

3/4 [DN 20]

1 [DN 25]

DESCRIPTION

DIMENSIONS

CONNECTION

1/2 [DN 15] &
3/4 [DN 20]

1 [DN 25]

"A"

1.53 [38.8]

1.89 [48.0]

"B" HEIGHT

4.89 [124.0]

5.12 [130.0]

"C" LENGTH

3.56 [90.4]

4.41 [112.0]

"D" \varnothing TO TOP OF CAP

2.38 [60.5]

2.58 [65.6]

WEIGHT lb [Kgs]

3.31 [1.5]

4.59 [2.0]

MAXIMUM ALLOWABLE
PRESSURE(VESSEL DESIGN)

1010 psig AT 750° F (69.6 barg AT 399° C)

MINIMUM OPERATING
PRESSURE

3.5 psig (0.24 barg)

MAXIMUM OPERATING
PRESSURE

600 psig AT 486° F (41.4 barg AT 252° C)

Dimensions Are In Inches [mm]



Product

ENGLISH

CD No.

Rev;

Date

CD72SR 1/2 THRU 1 NPT/BSPT/SW

WEB
Y|N
✓

CD2959

A

03/06/2019

SHEET 1 OF 1

By: GaneshKumar V